

SCOPER

Video Laryngoscopy Device



Meet the Future of Airway Management!

Connectors

Connectors have an original standard push-pull locking system and a special safety mechanism up to 10,000 mating cycles with IP68 sealing performance.



Scoper Handle

Due to its stylish and ergonomic design, it increases maneuverability during intubation. Unique smooth surface of the blade makes it easier to use and clean.



Tube Passing Area

Due to the tube passage area at the bottom of the blade, it facilitates the orientation of the tube during intubation.



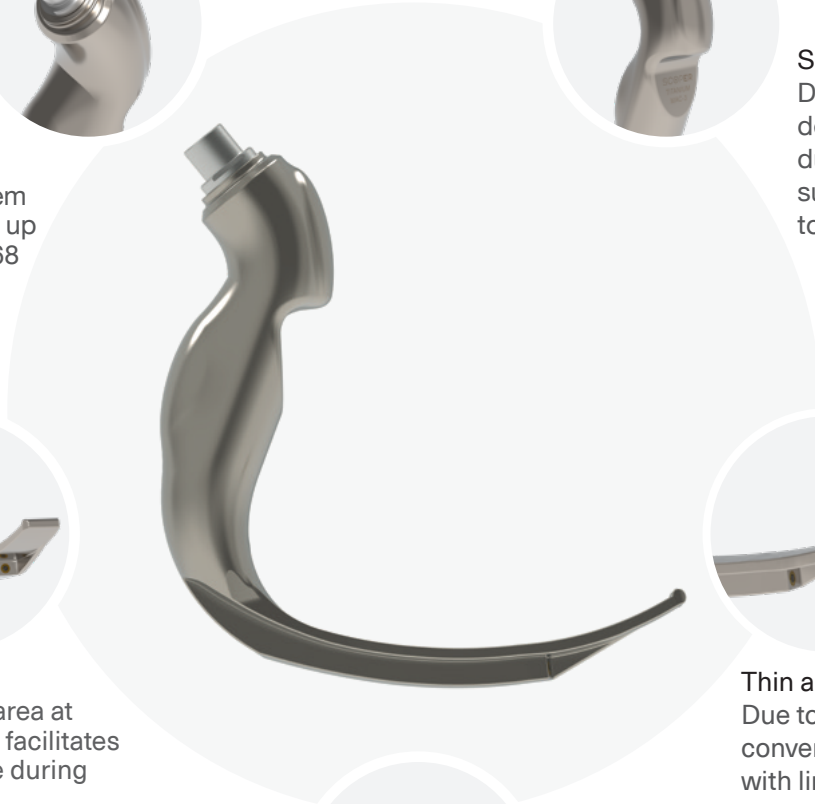
Thin and Elegant Tip Design

Due to its thin structure, it provides convenience in difficult intubation cases with limited mouth opening and cervical extension.



Camera and Anti-Fog System

Scoper has a 1280x720 p high resolution micro camera, 6 LED lights and an anti-fog system especially designed for endoscopic systems.



MAC Blades



MAC- 4
Adult Blade



MAC- 3
Adult Blade



MAC- 2
Pediatric Blade

MILLER Blades



MIL-1
Infant Blade



MIL- 0
Premature Infant
Blade

Difficult Intubation Blades



Advance Adult
Blade



Advance Pediatric
Blade

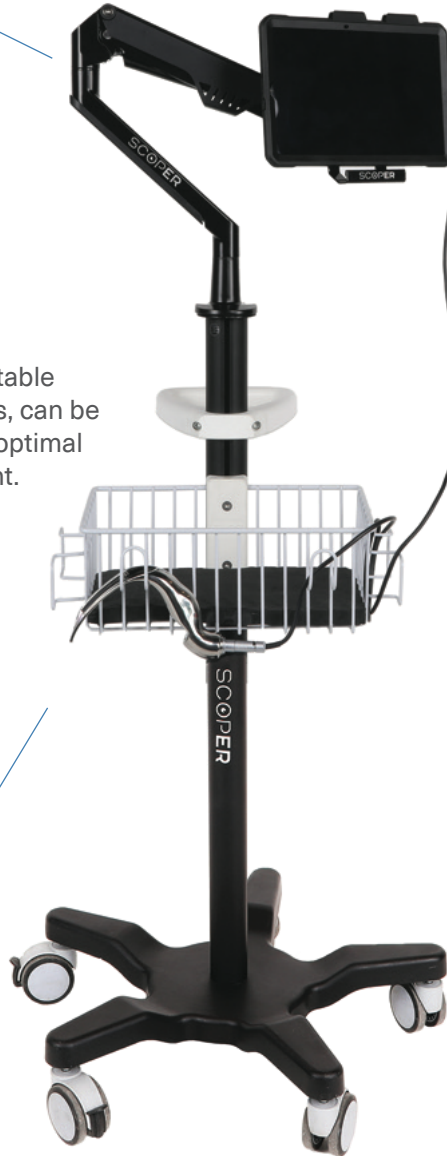
Adjustable Monitor Arm



Scoper monitor by attaching an adjustable monitor arm which can move in 4 axes, can be positioned over the patient providing optimal position for operator's direct view sight.



Material Basket



10.4" Touchscreen Monitor

Monitor Protective Stand



Shock-resistant multi-layered case provides protection against accidental drops and bumps. Stand can also be mobilized easily from the unit with the help of latch for blue-code scenarios.



Mobile Stand with Wheels

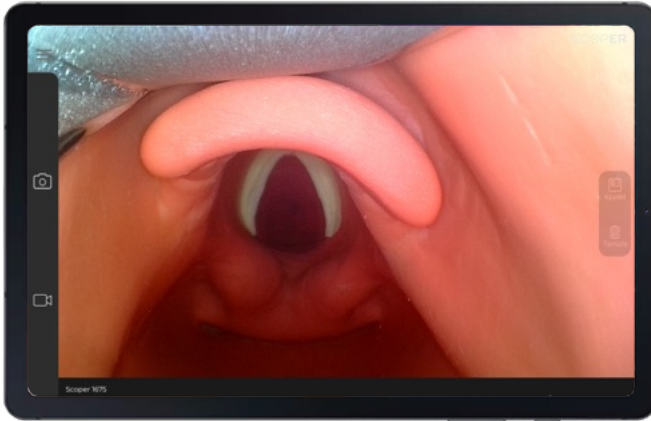
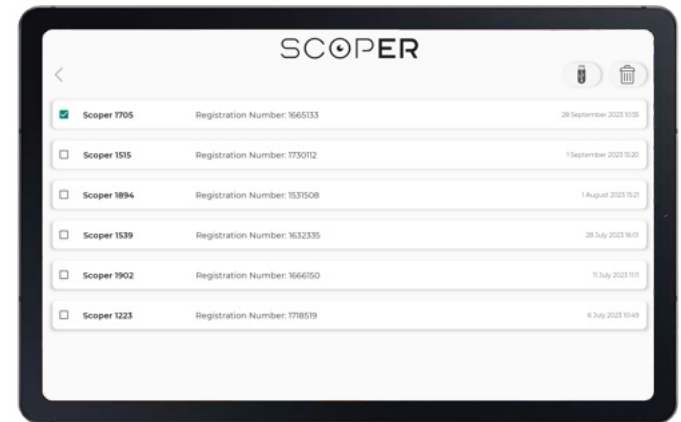


Photo and Video Recording

Scoper mobile application offers the ability to record images during the process. In this way, both video and image recordings can be taken and the recordings can then be reviewed after the procedure.

Patient Registration & Data Transfer

Patients can be recorded with a unique registration number and clinical information can be added to this registration. The recorded data can easily be transferred either with a USB or Wi-Fi to an external storage unit.





Carry Case

Scoper carrying case with its special compartments enables conveniently organizing and transporting the monitor, blade, power, video cables, stilet, airway, and intubation tubes.



Power Cord & Adapter

You can charge the monitor by plugging it into an outlet via a 2m long cable and fast charging adapter so that it is ready when you need it.



Video Cable

The Type-C tip is attached to the monitor, and the connector tip is attached to the blade part. Scoper mobile application detects the camera automatically.



Special Anglulated Stilet

It has a special angulated design that is compatible with the Scoper blades.



USB-Type C Converter

The patient data you saved in the Scoper application can easily be transferred with USB.



Protective Plug

During cleaning and disinfection process, the plug increases sealing performance.

Scan for website:



Technomedicare Medikal Ticaret A.Ş.

Bahçelievler Mahallesi 323/1 Cad. C Blok Gazi Üniversitesi Teknokent Binası Apt. No: 10/50C/139 Gölbaşı/ANKARA/Türkiye Telefon : +90 (312) 484 97 77

E-mail : info@technomedicare.com

www.scop-er.com

SCOPER

